



MARIE LUPLAU

Fra Kvindevalgrets Kampens Første Dage

(From the Early Days of the Women's Suffrage Movement), 1891-97

Oil on canvas 149 x 235 cm. Courtesy of the Danish Parliament



EMILIE MUNDT

En Femkantet l'Hombre i Atelieret

(Five-Handed l'Hombre in the Studio), 1904

Oil on canvas 70 x 129 cm. Courtesy of Varde Museum



EMILIE MUNDT

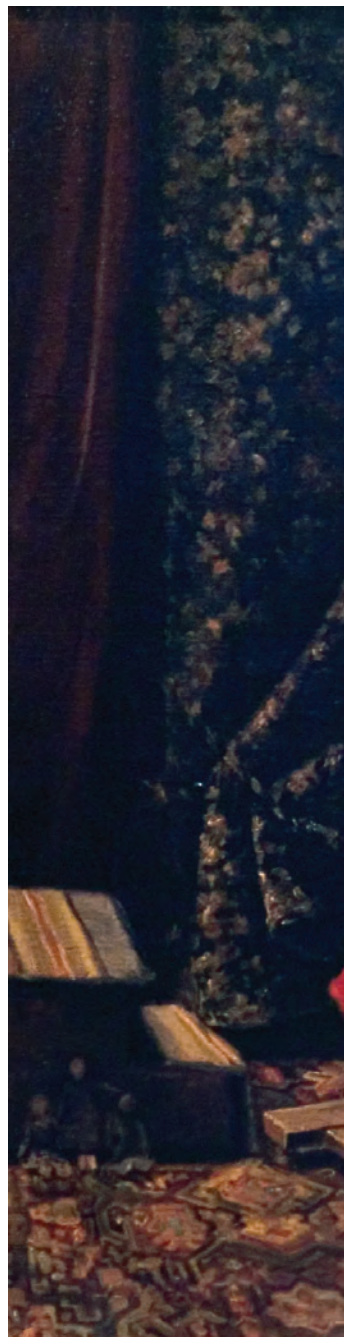
Fra Kyhns Tegneskole (From Kyhn's Drawing School), 1879

Drawing on paper 21 x 31 cm. Courtesy of Varde Museum

EMILIE MUNDT

*Malerinde og Barn i Atelieret
(Painter and Child in the Studio), 1893*

Oil on canvas 68 x 82 cm. Courtesy of Varde Museum







EMILIE MUNDT

Fra Asylet i Istedgade (From the Asylum at Istedgade), 1886

Oil on canvas 82 x 116 cm. Courtesy of Copenhagen City Museum





EMILIE MUNDT

Marie Luplau Maler i Skoven (Marie Luplau Painting in the Forest), 1863

Oil on canvas 23 x 15 cm. Courtesy of Varde Museum



EMILIE MUNDT

Må Jeg? (May I?), 1913

Oil on canvas. Courtesy of Varde Museum



MARIE LUPLAU

Parti fra Sorø Sø (Leaving Sorø Sø), 1895

Oil on canvas 22 x 35 cm. Courtesy of Varde Museum



MARIE LUPLAU

Fra Jyllands Vestkyst, Esbjerg (From Jutland's West Coast, Esbjerg), 1885

Oil on canvas 80 x 110 cm. Courtesy of Varde Museum

photos: SIGNATUR / Nicolai Vestergaard-Hansen